

9.

# VITRINA MURAL EXPOSITORA REFRIGERADA MODULAR FONDO 850 GRAB N'GO DISPLAY MODULAR CASES 850 DEPTH



Puertas opcionales  
Optional doors

EML 12 M1

9

MOD.

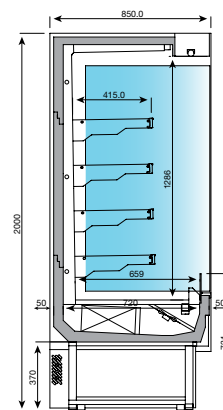
	→ ↗ ↑	└	⏻	⚡	🌀	❄️	≡	🌀	⚙️	❄️	🛒	💧	🕒	🧊
	Dimensiones sin costados Dimensions without sides Lxfxh (mm)	Costados Sides (2)(mm)	Potencia Power (W)	Tensión/ Frecuencia Electrical (V/Hz)	Compresor Compressor (HP) H1/M2	Potencia frigorífica (W a -10°C) H1/M2	Estantes Shelves	Compresor Compressor (HP)M1	LED	Potencia frigorífica (W a -15°C)M1	Consumo Consumption (kWh/24h)	Evaporación Evaporation	Control	Refrigerante Coolant

EML 6	625x870x2000	40+40	900	230/50	5/8	1160	4 M1/M2	3/4	✓	1092	14,43	Forzada Forced	Digital	R-452
EML 9	938x870x2000	40+40	940	230/50	3/4	1334	4 M1/M2	1	✓	1454	15,01	Forzada Forced	Digital	R-452
EML 12	1250x870x2000	40+40	1140	230/50	1	1755	4 M1/M2	1 1/4	✓	1886	18,25	Forzada Forced	Digital	R-452
EML 18	1875x870x2000	40+40	1325	230/50	1 1/3	2617	4 M1/M2	1 1/2	✓	2599	21,20	Forzada Forced	Digital	R-452
EML 25	2500x870x2000	40+40	1900	230/50	1 1/2	3220	4 M1/M2	2x1 1/4	✓	3772	30,32	Forzada Forced	Digital	R-452
EML 31	3125x870x2000	40+40	2930	230/50	2x1 1/4	4602	4 M1/M2	2x1 1/2	✓	5198	46,81	Forzada Forced	Digital	R-452



Costado ciego  
opcional  
Solid side optional

EML 9



Opciones y decoraciones pag. 388/389  
Options & decorations pag. 388 / 389

**EML 6 M1**

2.710 €

0°C/+2°C  
C.Clima. 3



**EML 6 M2**

2.651 €

+2°C/+5°C  
C.Clima. 3

**EML 9 M1**

3.141 €

0°C/+2°C  
C.Clima. 3



**EML 9 M2**

3.060 €

+2°C/+5°C  
C.Clima. 3

**EML 12 M1**

3.690 €

0°C/+2°C  
C.Clima. 3



**EML 12 M2**

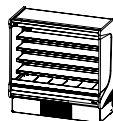
3.475 €

+2°C/+5°C  
C.Clima. 3

**EML 18 M1**

4.494 €

0°C/+2°C  
C.Clima. 3



**EML 18 M2**

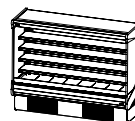
4.063 €

+2°C/+5°C  
C.Clima. 3

**EML 25 M1**

5.619 €

0°C/+2°C  
C.Clima. 3



**EML 25 M2**

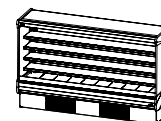
5.073 €

+2°C/+5°C  
C.Clima. 3

**EML 31 M1**

7.020 €

0°C/+2°C  
C.Clima. 3



**EML 31 M2**

6.423 €

+2°C/+5°C  
C.Clima. 3