

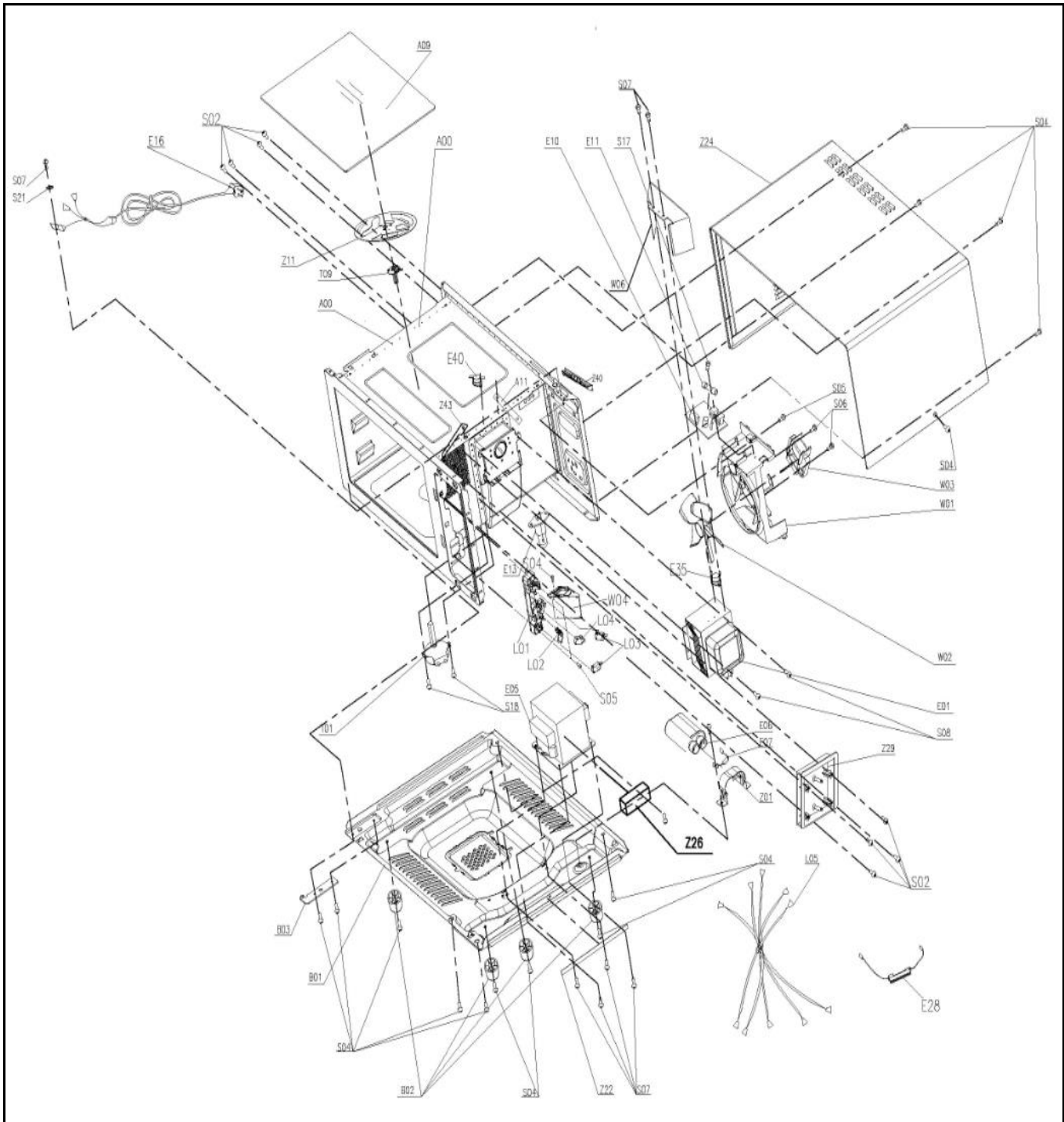
# Drawing



**Hendi B.V.**  
 Steenoven 21  
 3911 TX Rhenen  
 The Netherlands

<b>Batch #</b>	<b>Appliance part#</b>
660840 and up	<b>281352</b>
<b>Description</b>	
Microwave 1000W	

<b>Date</b>	21-08-2018	<b>Revision #</b>	1.0
<b>Revision</b>	First Bill of Materials (BOM)		





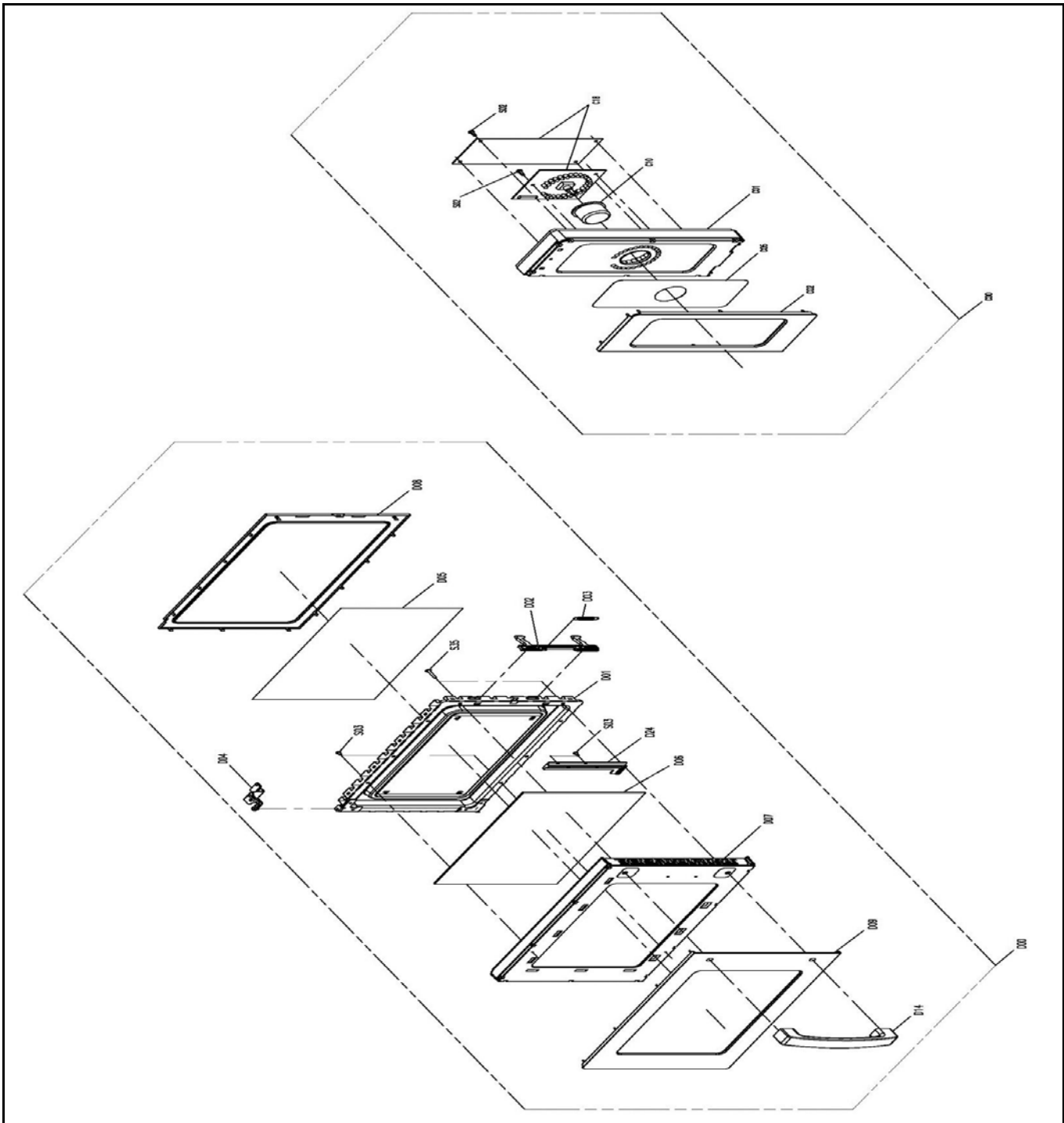
Drawing




Hendi B.V.  
Steenoven 21  
3911 TX Rhenen  
The Netherlands

Batch #	Appliance part#
660840 and up	281352
Description	
Microwave 1000W	

Date	21-08-2018	Revision #	1.0
Revision	First Bill of Materials (BOM)		



**Bill of materials (BOM)**

 <p><b>Hendi B.V.</b> Steenoven 21 3911 TX Rhenen The Netherlands</p>	<b>Batch #</b>	<b>Appliance part#</b>
	660840 and up	<b>281352</b>
	<b>Description</b>	
Microwave 1000W		


<b>Date</b>	21-08-2018	<b>Revision #</b>	1.0
<b>Revision</b>	First Bill of Materials (BOM)		

Item	Description	Part#	Quantity	Remark	Picture
C00	Control Panel Assembly	945230	1	Incl. Item C18	
C18	Control Panel PCB	nss	1	Includes Main- and Controlboard	
D00	Complete Door Assembly	945247	1	Incl. Item D01, D08, D14, D24	
D01	Door Frame	nss	1	Available as (no.9)	
D08	Door Gasket	nss	1	Available as (no.9)	
D14	Door Handle	nss	1	Available as (no.9)	
D24	Screw ST4X8	n/a			

n/a -> not available

nss -> not sold separately

### Circuit diagram

 <p><b>Hendi B.V.</b> Steenoven 21 3911 TX Rhenen The Netherlands</p>	Batch #	Appliance part#
	660840 and up	<b>281352</b>
	Description	
	Microwave 1000W	

Date	21-08-2018	Revision #	1.0
Revision	First Bill of Materials (BOM)		

