

## Tablero Top

### Top Tabletop

Los tableros Topalit son superficies de mesa de alta resistencia elaboradas a partir de partículas de madera y resinas sintéticas termoendurecidas, prensadas a elevada presión y temperatura. Este proceso de fabricación da como resultado un producto compacto, sellado y especialmente duradero.

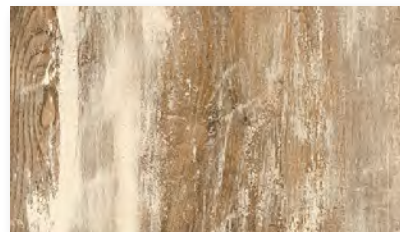
Se caracterizan por su elevada resistencia a la humedad, al agua, al calor y a los impactos, así como por su fácil mantenimiento y limpieza.



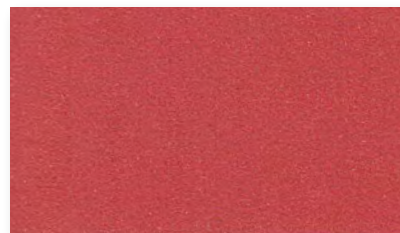
**CARIBE**  
CARIBBEAN



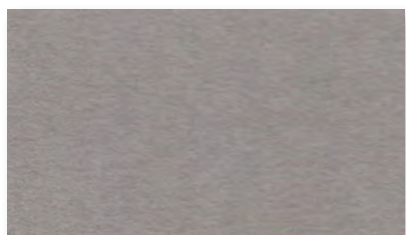
**MAR BLANCO**  
WHITE SEA



**PINO CANADIENSE**  
CANADIAN PINE



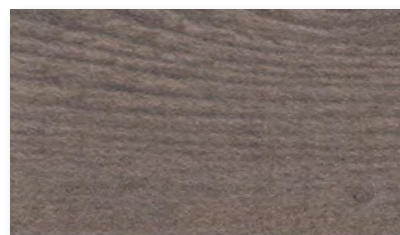
**ROJO**  
RED



**PLATA**  
BRUSHED SILVER



**URBAN**  
URBAN



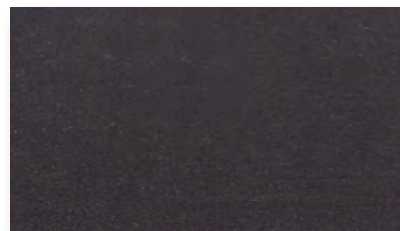
**PINO CENIZA**  
ASH PINE



**PINO MARÍTIMO**  
MARITIME PINE



**TRAVERTINO**  
TRAVERTINE



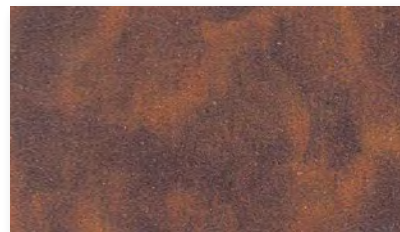
**WENGUÉ**  
WENGE



**SÁHARA**  
SAHARA



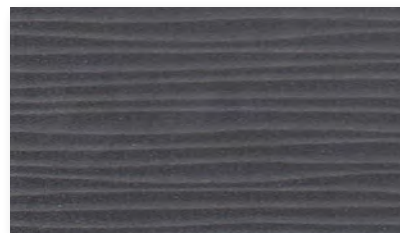
**PINO**  
PINE



**ARIZONA**  
ARIZONA

*Topalit tabletops are high-resistance table surfaces made from wood particles and thermosetting synthetic resins, pressed under high pressure and temperature. This manufacturing process results in a compact, sealed, and exceptionally durable product.*

*They are characterized by their high resistance to moisture, water, heat, and impacts, as well as their ease of maintenance and cleaning.*



**MAR NEGRO**  
BLACK SEA