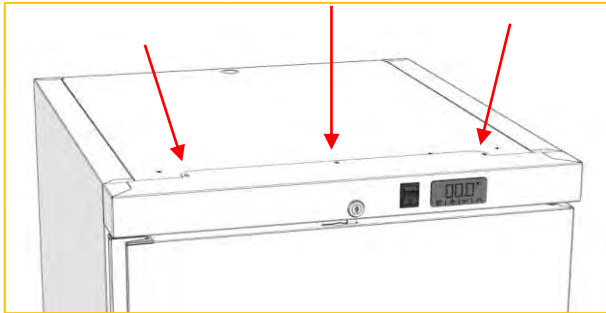


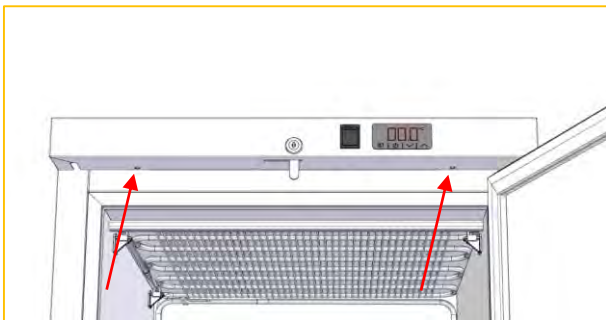
CAMBIO SENTIDO APERTURA PUERTA MODELOS AGB DOOR OPENING DIRECTION CHANGE AGB MODELS

1. Desmontar cuadro de mandos / Dismount scorecard:

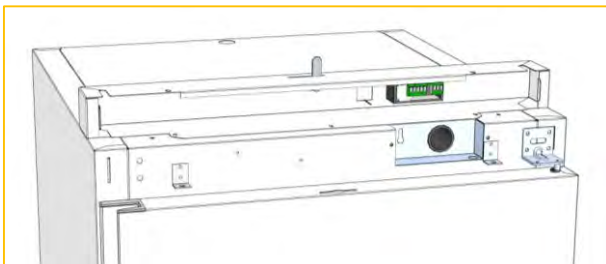
a. Quitar tornillos fijación superior / Remove upper fixing screws:



b. Quitar tornillos fijación inferior (realizar con puerta abierta) / Remove lower fixing screws (perform with door open):

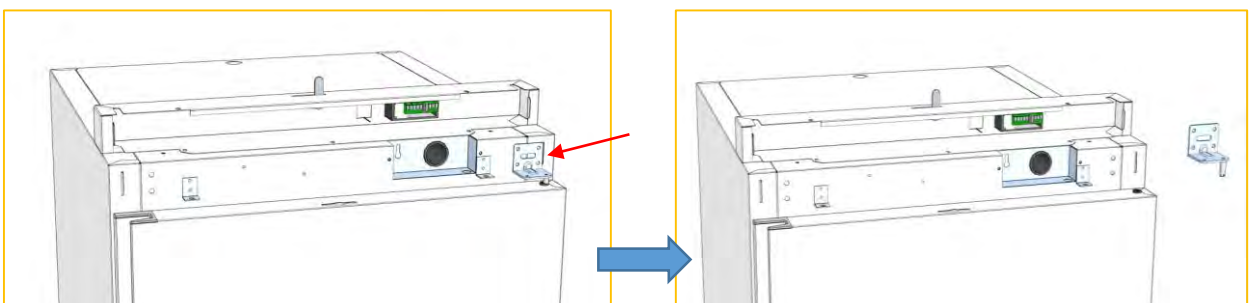


c. Retirar cuadro de mandos (tener cuidado con el cableado y evitar que se suelte algún terminal) y colocar este sobre el techo del aparato / Remove the control panel (be careful with the wiring and avoid loosening any terminal) and place it on the ceiling of the device:

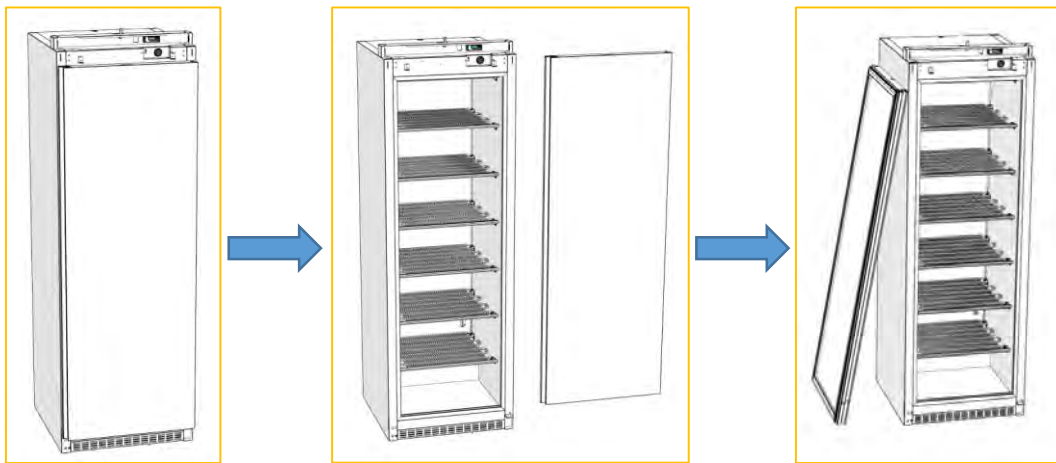


2. Desmontar puerta y bisagras (hacer el proceso con la puerta cerrada) / Disassemble door and hinges (do the process with the door closed):

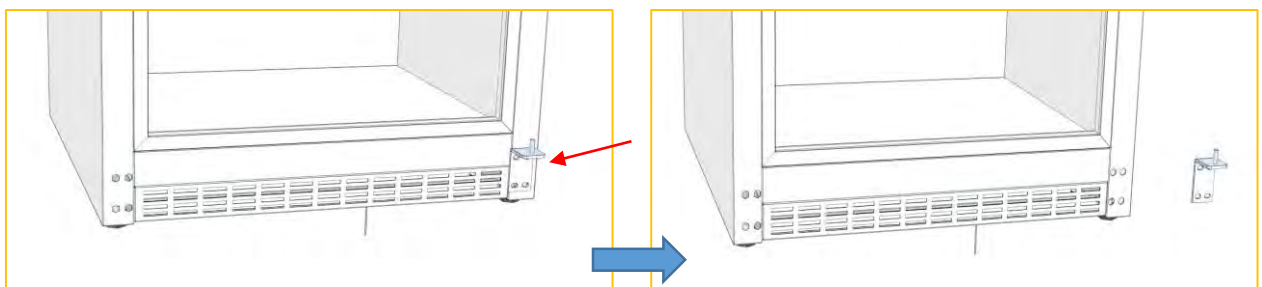
a. Desmontar bisagra superior (sujetar puerta y quitar tornillos) / Remove upper hinge (hold door and remove screws):



b. Retirar puerta / Remove door:

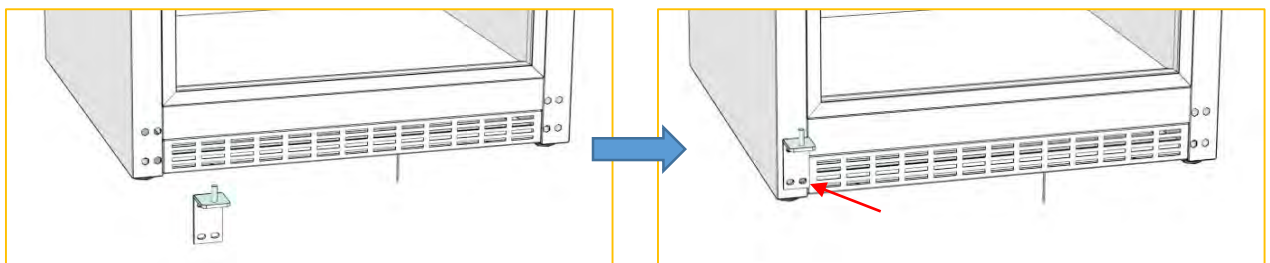


c. Desmontar bisagra inferior / Remove lower hinge:

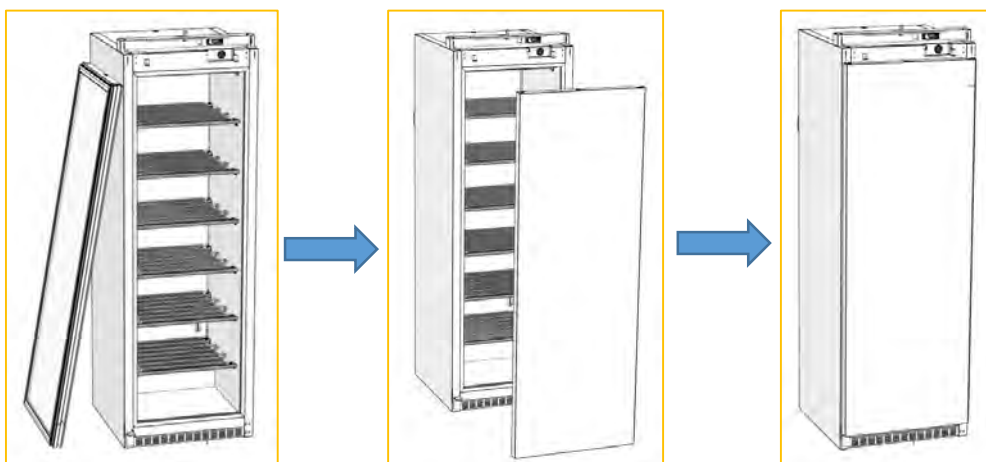


3. Montar bisagras y puerta (lado contrario) / Assemble hinges and door (opposite side):

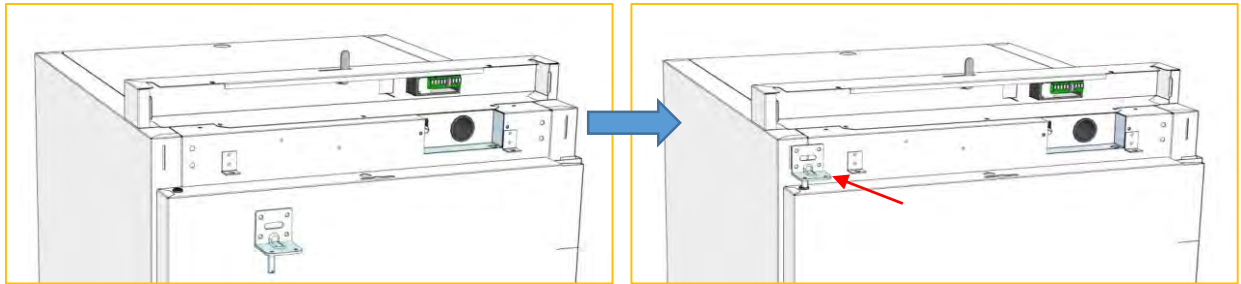
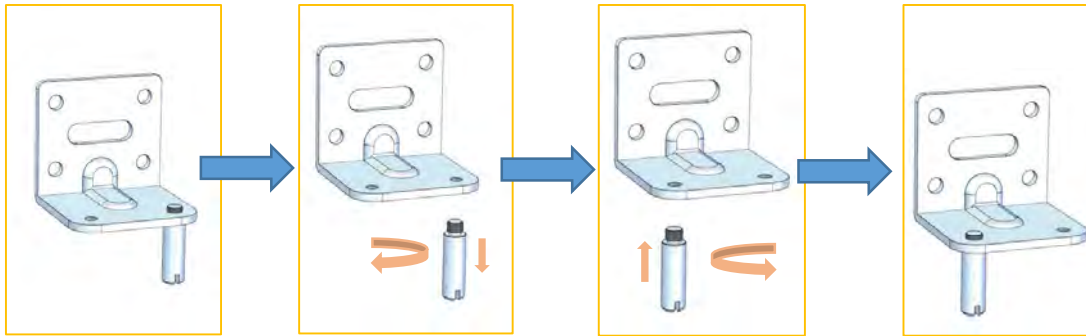
a. Colocar bisagra inferior / Fit lower hinge:



b. Colocar puerta (apertura contraria) / Place door (opening opposite):



- c. Colocar bisagra superior (cambiar posición eje de giro antes de colocar) / Place top hinge (change position rotation axis before placing):



4. Colocar cuadro mandos y fijar tornillos (revisar conexiones antes de cerrar) / Place control panel and fix screws (check connections before closing):

