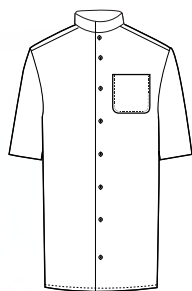


Camisa y blusa cuello mao manga corta

Short sleeve mandarin collar shirt and blouse



33%



67%

REF: SIROCO 3003 BLANCO

REF SIROCO 3003C RESTO COLORES

Descripción *Description*

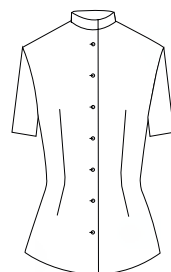
Camisa caballero cuello mao de manga corta con un tejido popelín de 115 gr/m². Sin tapeta en botonadura y dos pinzas, una a cada lado, en espalda.

Short sleeved mandarin collar men's shirt in 115 gr/m² poplin cloth. Without plackets in the buttons and two pleats, one on each side of the back.

COLORES: 00 blanco, 99 negro, 55 granate
COLOURS: 00 white, 99 black, 55 maroon

TALLAS: 2, 3, 4, 5, 6, 7, 8, 9
SIZES: 2 to 9

COMPOSICION: 33% algodón, 67% poliéster
COMPOSITION: 33% cotton, 67% polyester



33%



67%

REF: BALI 3503 BLANCO

REF BALI 3503C RESTO COLORES

Descripción *Description*

Blusa entallada cuello mao de señora de manga corta con un tejido popelín de 115 gr/m². Tapeta en botonadura y dos pinzas, una a cada lado, en espalda y delantero.

Short sleeved fitted blouse for women in 115 gr/m² poplin cloth. Without plackets in the buttons and two pleats, one on each side, in the back and in the front.

COLORES: 00 blanco, 99 negro, 55 granate
COLOURS: 00 white, 99 black, 55 maroon

TALLAS: 36, 38, 40, 42, 44, 46, 48, 50, 52, 54, 56, 58
SIZES: 36 to 58

COMPOSICION: 33% algodón, 67% poliéster
COMPOSITION: 33% cotton, 67% polyester



00

55

99

