

GASTRONORM POLIPROPILENO / POLYPROPYLENE GASTRONORM /
GASTRONORME POLYPROPYLÈNE / POLYPROPYLEN GASTRONORM**HOSTELERÍA10.com**

Las mejores marcas, ofertas y precios

PATENTED EXCLUSIVE

- 40 °C
 + 110 °C

ESPAÑOL

UTILIZACIÓN: ALMACENAMIENTO DE PRODUCTOS A GRANEL, INGREDIENTES VARIOS EN NEVERAS O CÁMARAS FRIGORÍFICAS.
IDEAL PARA TRANSPORTE Y COCCIÓN EN MICROONDAS.

ENGLISH

USE TO STORE BULK PRODUCTS AND INGREDIENTS IN COOLERS, FREEZERS OR PANTRY.
HIGHLY RECOMMENDED FOR TRANSPORTATION AND MICRO-WAVES COOKING.

FRANÇAIS

UTILISATION : STOCKAGE DE PRODUITS ET INGRÉDIENTS EN VRAC DANS DES UNITÉS RÉFRIGÉRÉES OU PLACARDS.
IDÉAL POUR LE TRANSPORT ET LA CUISSON EN FOUR MICRO-ONDES.

DEUTSCH

GEBRAUCH: LAGERUNG VON UNVERPACKTEN LEBENSMITTEL, VERSCHIEDENEN ZUTATEN IN KÜHLSCHRÄNKEN ODER KÜHLKAMMERN.
IDEAL FÜR DEN TRANSPORT ODER ZUM KOCHEN IN MIKROWELLEN.

Tapa Polinorm® / Polinorm® Lid / Couvercle Polinorm® / Polinorm® Deckel

PATENTED EXCLUSIVE

| REF | Mod | € | U |
|--------------|-----|------|----|
| 1100 + COLOR | 1/1 | 9,10 | 20 |
| 1200 + COLOR | 1/2 | 5,45 | 10 |
| 1300 + COLOR | 1/3 | 4,75 | 20 |
| 1400 + COLOR | 1/4 | 3,85 | 20 |
| 1600 + COLOR | 1/6 | 3,45 | 15 |
| 1900 + COLOR | 1/9 | 3,05 | 20 |

Adaptable a / Adjustable to / Adaptable à / Einsetzbar:

Cubetas GN inox, PC, sin Bisfenol-A y PP /
St/Steel, PC, without Bisphenol-A and PP GN containers /
Bacs GN inox, PC, sans Bisphénol-A et PP /
GN Behälter rostfrei, PC, ohne Bisfenol-A und PP

Ref. color tapa /
Ref. colour lid /
Ref. couleur couvercle /
Art.Nr. Deckelfarbe

**1/1** 530 x 325 mm

| REF | H mm | Lts | € | U |
|--------|------|-------|-------|----|
| 1106P1 | 65 | 8,70 | 10,85 | 15 |
| 1110P1 | 100 | 13,30 | 11,15 | 10 |
| 1115P1 | 150 | 19,60 | 14,30 | 10 |
| 1120P1 | 200 | 25,50 | 18,05 | 15 |

1/2 325 x 265 mm

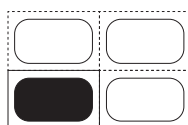
| REF | H mm | Lts | € | U |
|--------|------|-------|------|----|
| 1206P1 | 65 | 4,00 | 6,50 | 15 |
| 1210P1 | 100 | 6,00 | 7,10 | 15 |
| 1215P1 | 150 | 8,70 | 8,60 | 15 |
| 1220P1 | 200 | 11,20 | 9,95 | 15 |

1/3 325 x 175 mm



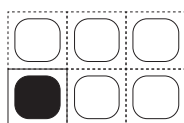
| REF | H mm | Lts | € | U |
|--------|------|------|------|----|
| 1306P1 | 65 | 2,35 | 4,35 | 15 |
| 1310P1 | 100 | 3,50 | 4,95 | 15 |
| 1315P1 | 150 | 5,00 | 5,90 | 15 |
| 1320P1 | 200 | 6,35 | 7,40 | 15 |

1/4 265 x 162 mm



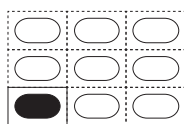
| REF | H mm | Lts | € | U |
|--------|------|------|------|----|
| 1406P1 | 65 | 1,65 | 3,55 | 15 |
| 1410P1 | 100 | 2,46 | 3,85 | 15 |
| 1415P1 | 150 | 3,47 | 4,45 | 15 |

1/6 176 x 162 mm



| REF | H mm | Lts | € | U |
|--------|------|------|------|----|
| 1606P1 | 65 | 0,95 | 2,65 | 20 |
| 1610P1 | 100 | 1,40 | 2,95 | 20 |
| 1615P1 | 150 | 1,95 | 3,85 | 15 |

1/9 176 x 108 mm



| REF | H mm | Lts | € | U |
|--------|------|------|------|----|
| 1906P1 | 65 | 0,54 | 3,45 | 15 |
| 1910P1 | 100 | 0,77 | 3,85 | 15 |

Tapa policarbonato / Polycarbonate lid / couvercle Polycarbonate / Polycarbonat Deckel



| REF | Mod | € | U |
|--------|-----|-------|----|
| 1100C1 | 1/1 | 13,90 | 20 |
| 1200C1 | 1/2 | 7,20 | 10 |
| 1300C1 | 1/3 | 5,55 | 20 |
| 1400C1 | 1/4 | 4,35 | 20 |
| 1600C1 | 1/6 | 3,85 | 15 |
| 1900C1 | 1/9 | 3,45 | 20 |

Fondo perforado / Perforated bottom / Fond perforé / Gelochter Boden



| REF | Mod | € | U |
|--------|-----|------|----|
| 1150P1 | 1/1 | 8,10 | 15 |
| 1250P1 | 1/2 | 3,75 | 15 |
| 1350P1 | 1/3 | 3,45 | 20 |
| 1450P1 | 1/4 | 2,95 | 20 |
| 1650P1 | 1/6 | 1,95 | 15 |