








Refrigerador de botellas / Chest bottle cooler / Refridisseur de bouteilles (EB)

Refrigerador de botellas con cajones / Chest bottle cooler with drawers / Refridisseur de bouteilles avec tiroirs (EBC)

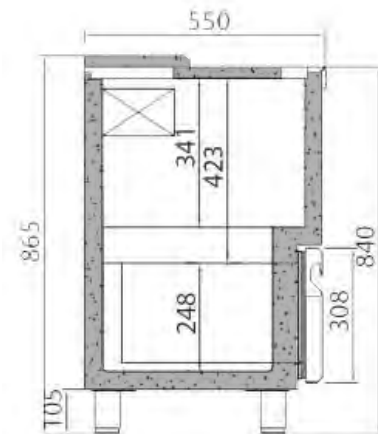
MODELO MODELE MODÈLE							
Precio Price Prix							
Medidas Measures [mm] Mesures	1004 x 550 x 865 mm.	1479 x 550 x 865 mm.	1954 x 550 x 865 mm.	2429 x 550 x 865 mm.	1004 x 550 x 865 mm.	1479 x 550 x 865 mm.	1954 x 550 x 865 mm.
Temperatura Temperature Température	+3°C/+6°C						
Clase Climática Climatic class Classe climatique	4 / 38°C						
Tensión/Frecuencia Electrical data Tension électrique	230V/1ph/50Hz						
Controlador Controller Régulateur	-						
Material Material [EXT/INT] Matériel	Encimera INOX AISI 304 / Interior-Exterior AISI 430 INOX AISI 304 Worktop / AISI 430 Interior-Exterior Dessus INOX AISI 304 / Interior-Extérieur AISI 430						
Espesor Thickness Épaisseur	40						
Aislamiento Isolation Isolation	40kg/m ³ / Free CFC's / Zero ODP-GWP						
Capacidad Capacity Capacité	265	445	620	800	265	445	620
Puertas Doors Portes	2	3	4	5	2	3	4
Nº Separadores Nº Dividers Nº Séparateur	1	2	3	4	1	2	3
Sistema de frío Cooling System Système de froid	Forzado / Forced air / Ventilé Evaporador estático / Static evaporator / Évaporateur statique						
Desescarche Defrost Dégivrage	-						
Expansión Expansion Expansion	Capilar / Capillary / Capillaire						
Potencia Power Puissance	122	180	180	355	122	180	180
Potencia frig. Cooling capacity Puissance Frig.	169	370	370	690	169	343	343
Consumo Consumption Consommation	-						
Clase energética Energy class Classe Énerg.	-						
Refrigerante Refrigerant Gaz	R-600a	R-290			R-600a	R-290	
Opcional Optional Options	Separador / Divider / Séparateur (504X32) 115V/1 ph/60 Hz 230V/1 ph/60 Hz				-		



Serie / Series / Série **EB / EBC**

+Info: www.infrico.com

EBC 2000 II



EB 1000 II



EBC 1000 II

